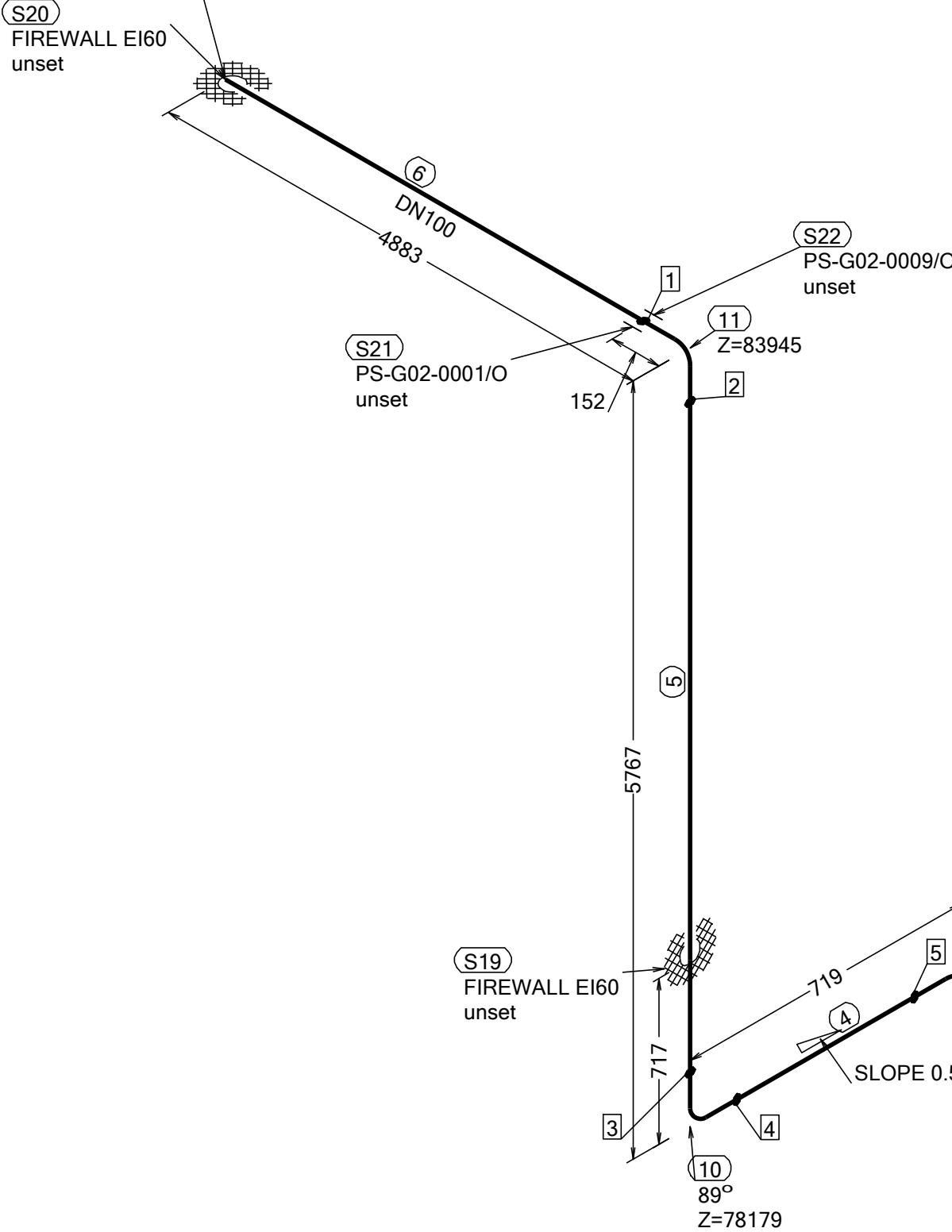


N (Y)

CONT. ON  
DRAWING: ESS-XXXXX14  
X=595394  
Y=10958  
Z=83945



WELD	WPS	FABRICATION MATERIALS					
1		PT NO	COMPONENT DESCRIPTION	DN	MATERIAL	QTY (mm)	REMARKS
2							
3							
4							
5							
6							
7							
8							
9							
10							
11							
12							
1		PIPE, SS-EN 10217-7, TC1, 114.3x2.0	100	EN 1.4404	1560		
2		PIPE, SS-EN 10217-7, TC1, 114.3x2.0	100	EN 1.4404	3404		
3		PIPE, SS-EN 10217-7, TC1, 114.3x2.0	100	EN 1.4404	1450		
4		PIPE, SS-EN 10217-7, TC1, 114.3x2.0	100	EN 1.4404	417		
5		PIPE, SS-EN 10217-7, TC1, 114.3x2.0	100	EN 1.4404	5464		
6		PIPE, SS-EN 10217-7, TC1, 88.9x2.0	100	EN 1.4404	4731		
		FITTINGS					
7		ELBOW 90, TYPE 3D, SS-EN 10253-4, TYPE A, 114.3x2.0	100	EN 1.4404	1		
8		ELBOW 90, TYPE 3D, SS-EN 10253-4, TYPE A, 114.3x2.0	100	EN 1.4404	1		
9		ELBOW 90, TYPE 3D, SS-EN 10253-4, TYPE A, 114.3x2.0	100	EN 1.4404	1		
10		ELBOW 90, TYPE 3D, SS-EN 10253-4, TYPE A, 114.3x2.0	100	EN 1.4404	1		
11		ELBOW 90, TYPE 3D, SS-EN 10253-4, TYPE A, 114.3x2.0	100	EN 1.4404	1		
		FLANGES					
12		FLANGE WN, SS-EN 1092-1, TYPE 11, PN16	100		1		
		VALVES / IN-LINE ITEMS					
13		WORCESTER BALL VALVE BW, A599-666TT7TZ-BWJ DN100	100	EN 1.4404	1		